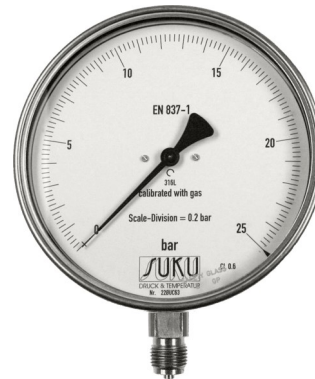



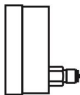
**TEST GAUGE FOR CHEMISTRY APPLICATION  
ACCORDING TO DIN EN 837-1  
also as safety version acc. to DIN EN 837-1/S3**



**Nominal size 160  
Connection position radial bottom  
or back excentric  
Class 0,6**



For exact pressure measurement and pressure tests on containers, for pipes, for laboratory environment and for quality management. Through scale division and knife edge pointer the measurement values can be read exactly.

Type	8761	8781	Options
Nominal size	160		NS100 Type <b>5331</b> as test gauge 0...1 up to 0...400 bar Type <b>8801</b> = Safety version S3
Symbol			With glycerine filling (possible from 0...2,5 bar up to 0...600 bar)
Accuracy class	class 0,6 acc. to DIN EN 837-1		
Display range	0...0,6 bar up to 0...1600 bar, negative and/or positive over-pressure: -0,6...0 bar up to -1...+15 bar		
Field of application	Static load: full scale value Alternating load: 0,9 x full scale value Short-term: 1,3 x full scale value		
Case	Stainless steel, blow-out back		
Bayonet ring	Stainless steel		
Measuring unit	Stainless steel		
Pressure connection material	Stainless steel		
Pressure connection	G 1/2 B		
Connection position	radial bottom	back excentric	
Window	Multi-layer safety glass		
Pointer mechanism	Stainless steel		
Dial	Aluminium white, scale black		Special scale, mirror type scale
Pointer	Knife edge pointer, Aluminium black		Red reference pointer
Protection class	IP 54 acc. to EN 60529 / IEC 529		IP 65 for filled gauges
Temperatures	Surrounding: -20°C up to +60°C Medium: -20°C up to 80°C		
Temperature influence	0,3% per 10 K deviation of the adjustment temperature (20°C)		
Adjustment medium	Up to 25 bar air, from 40 bar water or oil When ordering, please quote the used medium on the deployment site, because of changing the medium display changes could be possible.		
Optional mounting	Mounting front flange or back, triangel front ring with brackets		

**Type 8761, 8781**

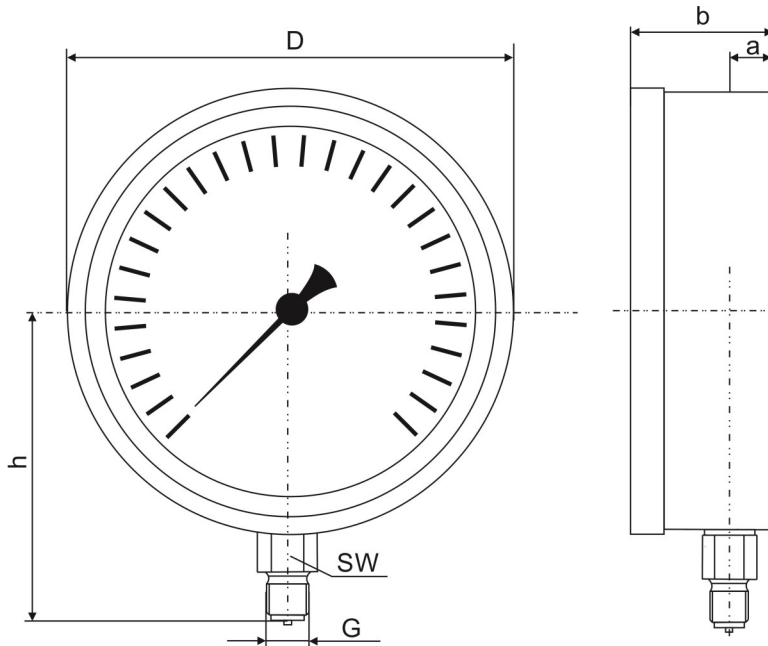
## Dimensional drawings

Dimensions in mm

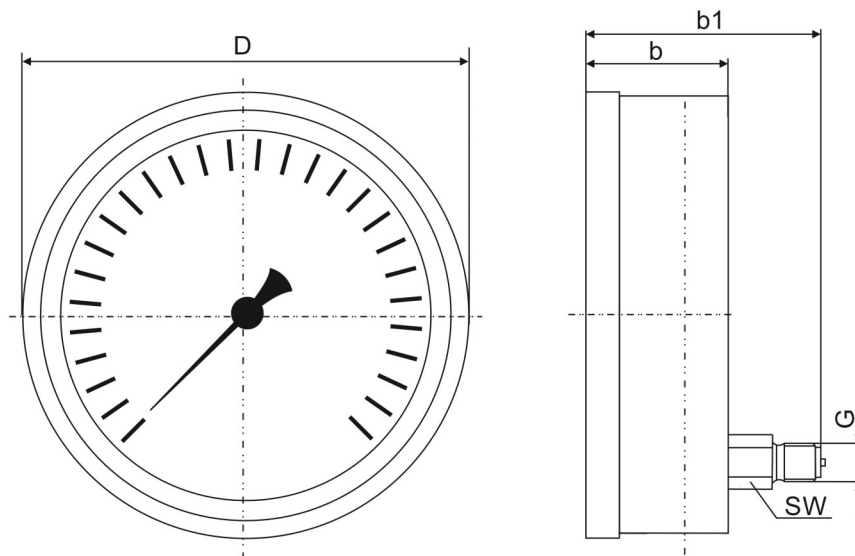


DRUCK & TEMPERATUR

### Type 8761



### Type 8781



Type	NS	D	b	b1	a	h	G	SW	Weight in kg unfilled, without mounting	Weight in kg filled, without mounting
8761	160	161	51	-	15	117	G 1/2 B	22	1,0 kg	2,1 kg
8781	160	160	51	86	-	-	G 1/2 B	22	1,0 kg	2,1 kg
5331	100	101	49	-	15	~80	G 1/2 B	22	0,90 kg	1,2 kg