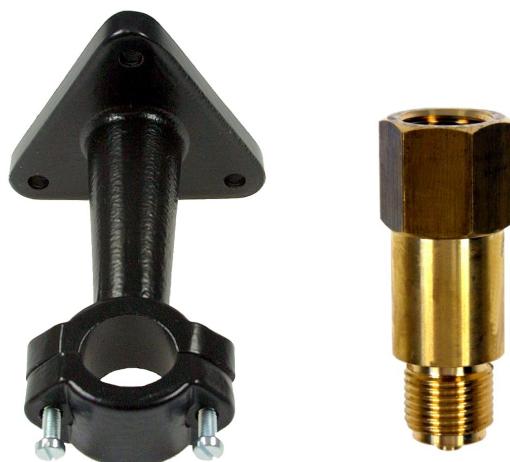


SURFACE MOUNTING BRACKET AND ADAPTER FOR SURFACE MOUNTING BRACKET according to DIN 16 281



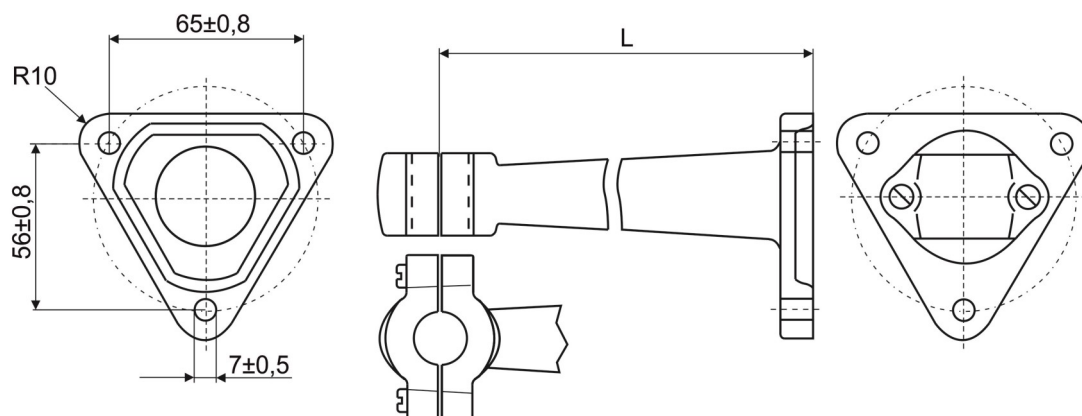
For the assembly of indicating devices, e.g. pressure and temperature measuring devices as well as measuring devices with capillary lines.



Surface mounting bracket

Material	Extension in mm (L)	Item No.
Aluminium, black	60	76 245
	100	76 265
	160	76 285
1.4571 (without illustration and without dimensional drawing)	60	76 243
	100	76 263
	160	76 283

Dimensional drawing Dimensions in mm



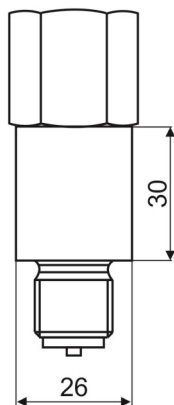
Adapter for surface mounting bracket



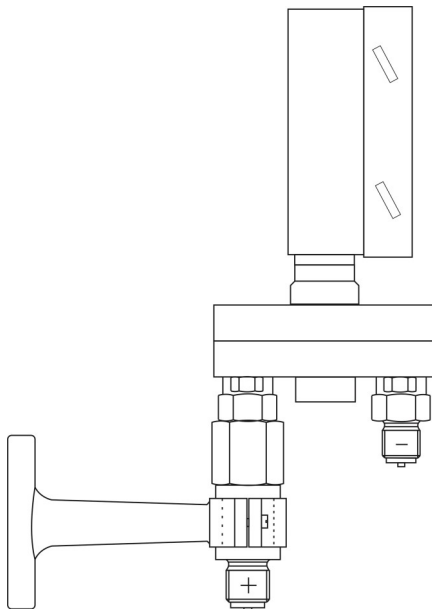
DRUCK & TEMPERATUR

Material	Connection	PN in bar	Item No.
Brass	G 1/2	250	89 15 1
	M20 x 1,5		89 17 1
Steel	G 1/2	600	89 15 2
	M20 x 1,5		89 17 2
1.4571	G 1/2		89 15 3
	M20 x 1,5		89 17 3

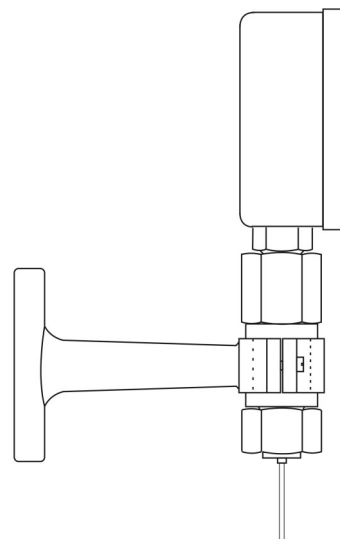
Dimensional drawing Dimensions in mm



Assembly examples



Differential pressure gauge (Typ 5595)
mounted with adapter



Pressure gauge with capillary line
mounted with adapter