

THERMOCOUPLES

with connection head
with exchangeable measuring insert



For universal use in processes with liquid and gaseous media, at low and medium pressures.



Applications

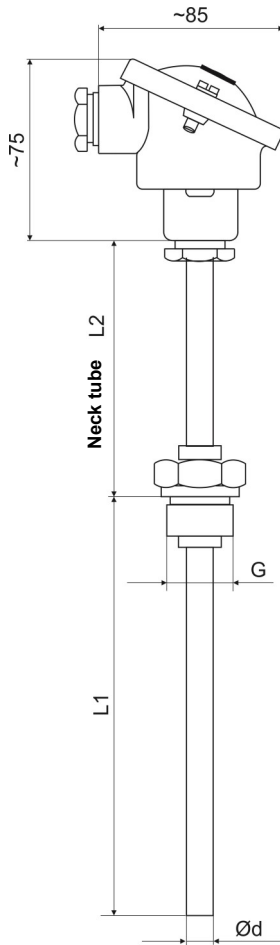
Air conditioning and refrigeration technology
Container and pipeline construction
Chemical industry
Apparatus construction
Heating and furnace construction

Type	7060	Options
Version	Basic version	EX-version, GL-implementation (ship building industry)
Connection head	Form B according to DIN 43 729	Form BUZ (Ex-version) others on request
Application temperature	up to +800°C	
Thermocouple	J (Fe-CuNi) DIN EN 60584 K (NiCr-Ni) DIN EN 60584	others (more noble) materials on request
Number thermocouple	1 thermocouple or 2 thermocouples	
Protection tube material	1.4571	others on request
Protection tube- Ø d	11 mm	others on request
Thread G	G1/2A	G3/4A, M20x1,5; M27x2 others on request
Insert length L1	160, 250, 400 mm	others on request
Neck tube length L2	130 mm	
Protection	IP54 according to DIN EN 60 529	

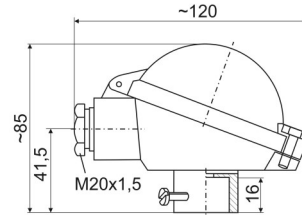
Type 7060

Dimensional drawing Dimensions in mm

with connection head Form B
version with neck tube



Connection head Form BUZ



Operating temperature / Limit deviation for thermocouples Typ J und K according to DIN 60 584
(cold junction temperature 0°C)

Type	max. permissible continuous operating temperature in air (°C)	permissible limiting error for class 1	in temperature range	permissible limiting error for class 2	in temperature range
J	700 (temporary 900)	± 1,5 °C	-40°C up to 375 °C	± 2,5 °C	-40°C up to 333 °C
		± 0,004 · Itl	375°C up to 750°C	± 0,0075 · Itl	333°C up to 750°C
K	1000 (temporary 1200)	± 1,5 °C	-40°C up to 375 °C	± 1,5 °C	-40°C up to 333 °C
		± 0,004 · Itl	375°C up to 1000°C	± 0,004 · Itl	333°C up to 1000°C