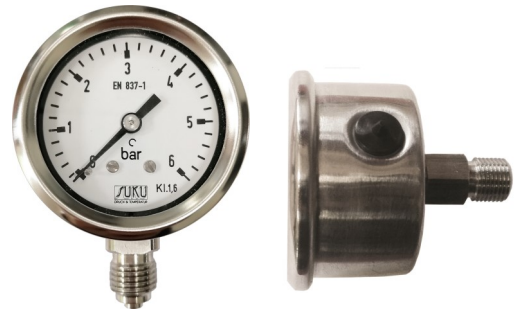


**BOURDON TUBE PRESSURE GAUGES
CRIMPED-ON RING CASE, STAINLESS STEEL
ACCORDING TO DIN EN 837-1**



**Nominal size NS 40 and NS 50
Connection position bottom
or centric back
with or without glycerine filling**

These pressure gauges are suitable for all liquid and gaseous aggressive media, as long as they are not highly viscous, do not crystallize and do not attack stainless steel.



Type	6010	6011	6020	6021	Options
Nominal size	40		50		
Symbol					
Accuracy acc. to DIN EN 837-1	Class 1,6; Class 2,5 for pressure range 0/600 bar				
Pressure ranges	0/0,6 up to 0/600 bar, Vakuum- and Mano-Vakuum ranges				
Case	Crimped-on ring stainless steel 1.4301, with blowout				
Case filling	without				fillable, with glycerine filling
Wetted parts	Bourdon tube stainless steel 316L (1.4404)				
Connection material	Stainless steel 316L (1.4404)				
Thread	G 1/8 B		G 1/4 B		G1/4 only type 6011 1/8" NPT, 1/4" NPT, a.A.
Connection position	bottom	centric back	bottom	centric back	Connection position radial at 3:00, 9:00, 12:00 o'clock only for NS 50
Window	Instrument glass		Polycarbonate		Polycarbonate at NG40 Instrument glass at NG50
Movement	Stainless steel				
Dial	Aluminium white, scale and lettering black				Special scale
Pointer	Aluminium black				
Temperatures	Storage: -20°C bis +70°C Ambient: -40°C bis +60°C Medium: bis +200°C		Storage: -20°C bis +70°C Ambient: -40°C bis +60°C Medium: bis +200°C		Medium-temp. up to +80°C filled devices, opt. up to +100°C
Protection	IP65 IP54: with cut-off blow-out plug		IP54 IP65: filled and closed blow-out		Increased degree of protection, e.g. IP65 without case filling, upon request
Mounting optional only for centric back connection	Front flange for panel mounting, U-clamp for panel mounting				
More options	Wetted parts free of grease and oil Orifice Ø0,3, Ø0,6 mm				
Weight approx. without filling	0,08 kg	0,08 kg	0,09 kg	0,09 kg	
with filling	0,09 kg	0,09 kg	0,13 kg	0,13 kg	

Type 6010, 6011, 6020, 6021

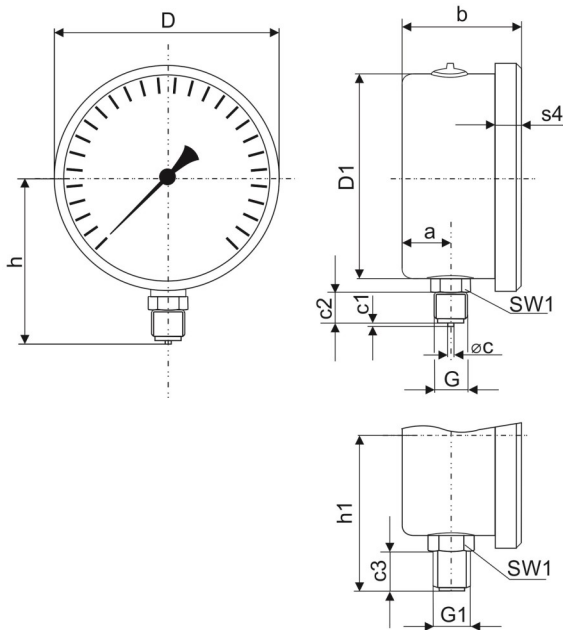
Dimensional drawings

Dimensions in mm

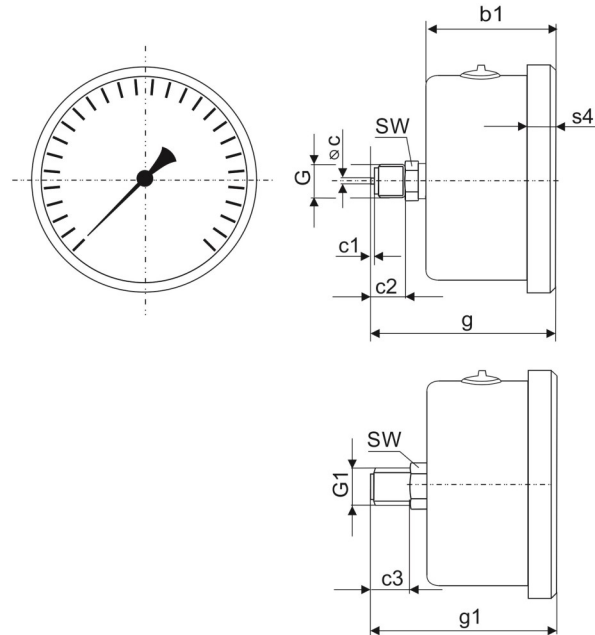


DRUCK & TEMPERATUR

Type 6010, 6020

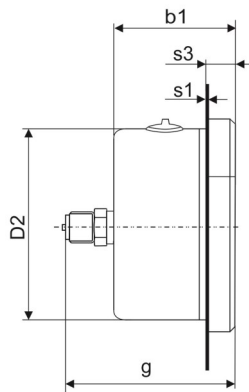
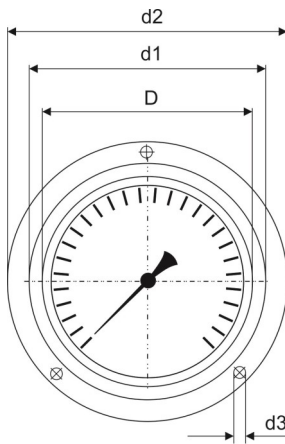


Type 6011, 6021



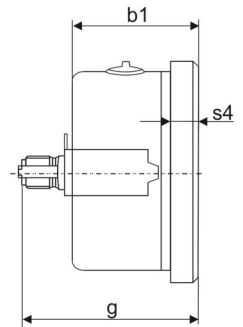
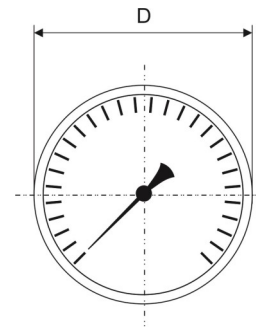
With front flange for panel mounting

NS 40: recommended panel cut out $\varnothing 42,5 \pm 0,3$ mm
NS 50: recommended panel cut out $\varnothing 54 \pm 0,3$ mm



With u-clamp for panel mounting

NS 40: recommended panel cut out $\varnothing 41 \pm 0,3$ mm
NS 50: recommended panel cut out $\varnothing 51 \pm 0,3$ mm



Type	NS	a	b	b1	c	c1	c2	c3	D	D1	D2	d1	d2	d3	G	G1	g	g1	h	h1	s1	s3	s4	SW	SW1
6010	40	10,3	29,5	-	4	2	10	10	44,5	39,5	-	-	-	-	G1/8B	1/8"NPT	-	-	35	-	-	-	-	-	10
6011	40	-	-	31,5	4	2	10	10	44,5	-	41,5	51	61	3,6	G1/8B	1/8"NPT	48	48	-	35	0,8	7,5	6,5	14	-
6020	50	10	29	-	5	2	13	13	54	48,5	-	-	-	-	G1/4B	1/4"NPT	-	-	45	-	-	-	-	14	-
6021	50	-	-	31	5	2	13	13	54	-	51	60	71	3,6	G1/4B	1/4"NPT	50	50	-	45	1	8	7	14	-