

DIFFERENTIAL PRESSURE GAUGE



Industrial version in stainless steel
according to EN 837-3, ND 100 / ND 160

Connection position one behind the other or side by side

without or with liquid filling

Accuracy class 1,6

Can be used in gaseous, liquid and chemical aggressive media. The device provides a high requirements, even in aggressive environments. Also suitable for viscous media measurement. The units are overload-proof and can be used up to a max. static pressure of 25 bar.



Model	5595	5596	Options
Nominal size	100	160	
Symbol			Output-signal 0-20 or 4-20 mA, Magnetic snap-action one-, two- or threefold <u>additional:</u> 3 spindle-valve-manifold
Accuracy class	1,6 % of full scale value		160-400 mbar = class 2,5
Ranges	0...100 mbar up to 0...25 bar		negative and/or positive pressure
Overload safety	max. static pressure 25 bar on both sides		max. 40 bar
Application	Constant load: up to full scale Fluctuating: 0.9 x full scale to		
Case	Stainless steel 1.4301, bayonet ring		with liquid filling
Window	Laminated safety glass		
Dial	Al white, scale and print black		
Pointer	Micro-adjustable pointer, Al black		
Movement	Stainless steel 1.4301		
Flange	Diameter 90 mm, 4 x M10 screws stainless steel Optional bleed screws top and bottom flange		90° offset
Diaphragm	Viton measure springs		
Wetted parts	Stainless steel 1.4571		
Pressure connection	Bottom, one behind the other or side by side		
Connection distance	Connection distance 54 mm (center)		
Pressure thread	2x G1/2 B male or 2x G1/4 female		3 spindle valve manifold
Temperature	Medium: -20°C up to 80°C, ambient -20°C up to 60°C		
Protection	IP 54 (filled IP 65) according EN 60529/IEC 529		

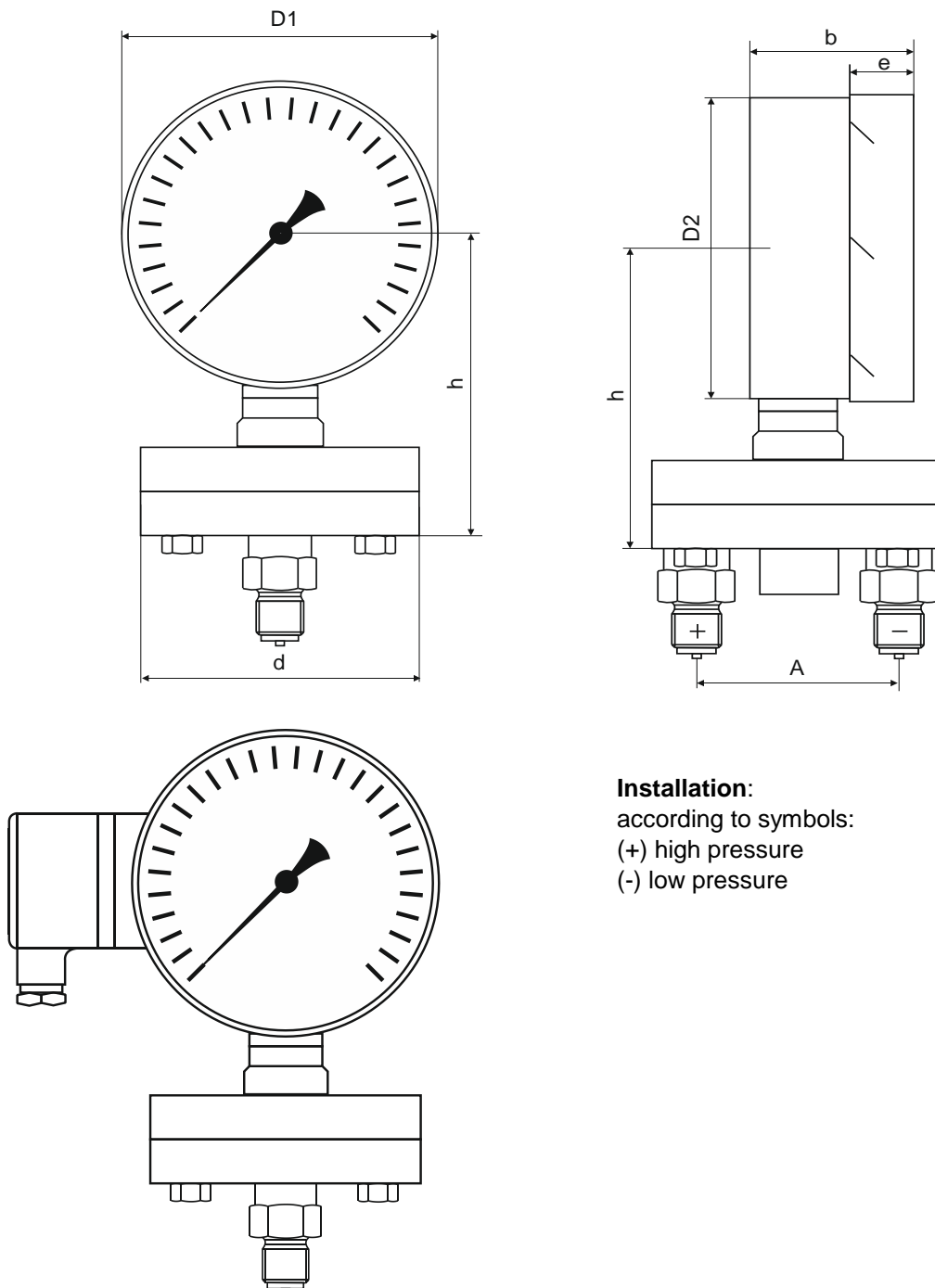
Dimensional drawings Dimensions in mm

100 ... 160 mbar, Flange dimension D120								
NG	D1	D2	A	b	d	e	h±2	A
100	101	99	54	50	ca. 115	19,5	111	54
160	161	159	54	50	ca. 115	19,5	143	54
250 mbar...10 bar, Flange dimension D90								
NG	D1	D2	A	b	d	e	h±2	A
100	101	99	54	50	83	19,5	111	54
160	161	159	54	50	83	19,5	143	54

Weight in kg

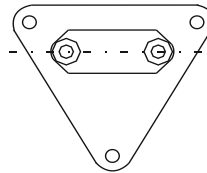
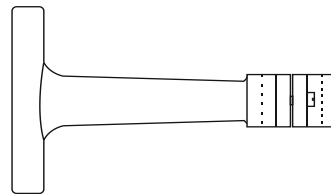
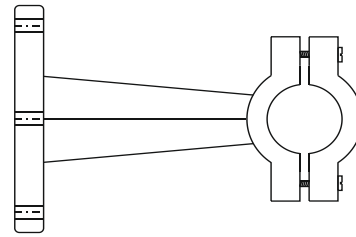
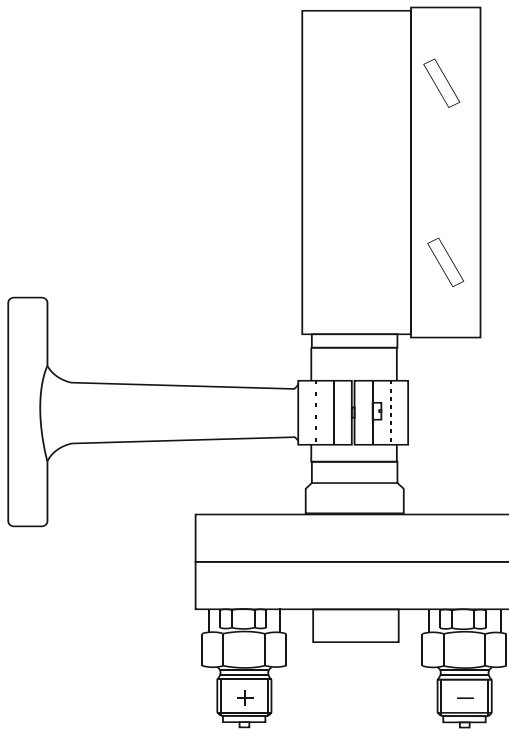
unfilled	filled
approx. 3,1	approx. 3,3
approx. 3,4	approx. 3,6

unfilled	filled
approx. 2,1	approx. 2,3
approx. 2,4	approx. 2,6



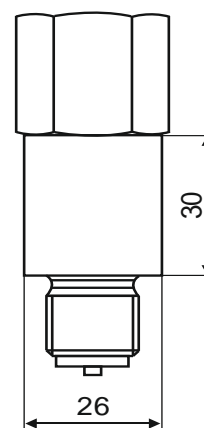
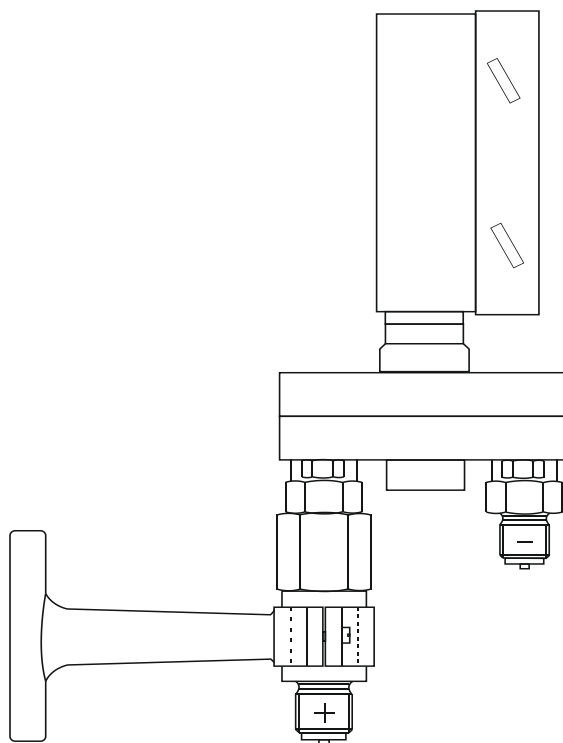
Installation:
 according to symbols:
 (+) high pressure
 (-) low pressure

Wall mounting



Option: bridge for pressure gauge holder (welded)

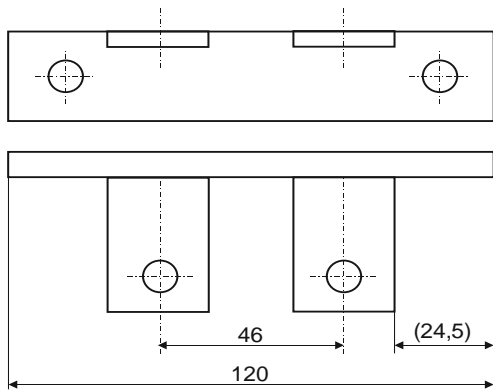
Surface mounting bracket



Option: bridge for pressure gauge holder (separately)

Wall mounting

Dimensions in mm



Option: Wall bracket (angle) 4 factory mounting options (90 ° offset)