

# SHUT-OFF COOK

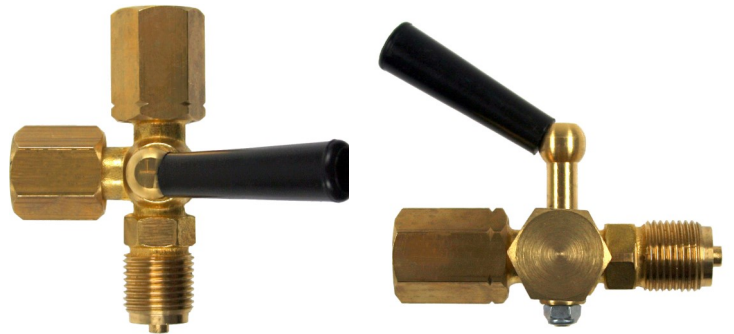
## Male x union nut with test connection



It is recommended to install a barrier between the pressure gauge and pressure line.

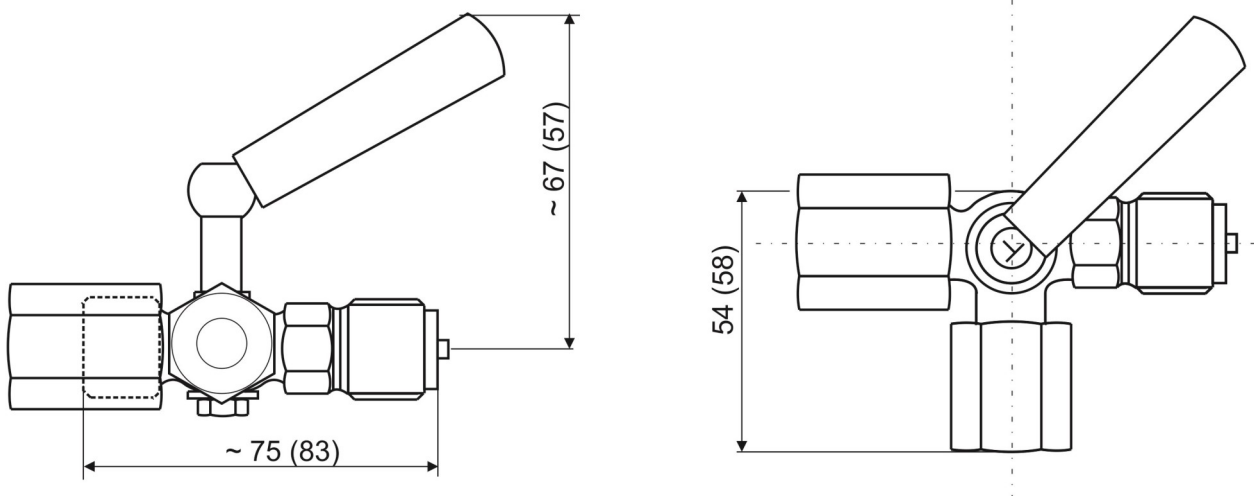
Shut-off cocks allow the inspection or replacement of a pressure measuring device without service interruption.

The additional connection of a test pressure gauge is possible through the test connection in series 35.



Type	35	Options
Construction	Male x union nut	
Material	Brass	Stainless steel
Material handle	heat-resistant plastic	
Nominal pressure of the pressure gauge	PN 25 (for higher pressures: use shut-off valves)	
Medium temperature	-10...+50°C	
Connection	G 1/2	M20 x 1,5
Test connection	M20 x 1,5	

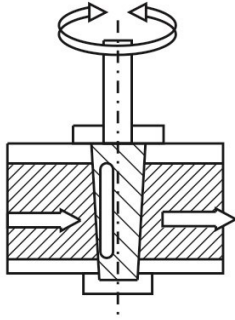
### Dimensional drawing Dimensions in mm



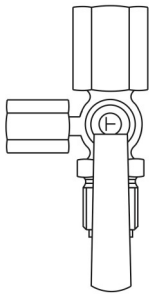
Dimensions in ( ) : dimensions of the stainless steel version

Type 35

## Functionality of plug valve

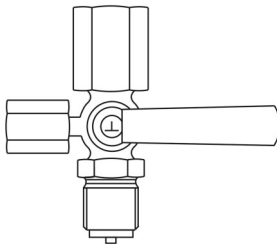


## Operation / setting options (the settings are engraved on the plug)



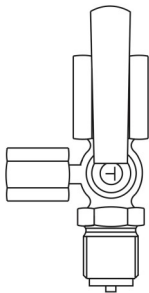
### Operation

Line open  
Pressure gauge under pressure

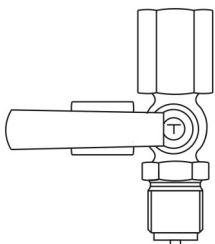


### Vent

Line closed  
Pressure gauge under pressure



### Test



### Blow out

Line open  
Pressure gauge inoperative