

STAINLESS STEEL PROBE FOR CLEAN AND SOILED LIQUIDS



DRUCK & TEMPERATUR

Nominal pressure 0...100 mbar up to 0...10 bar

Option: Pt100 / Pt1000

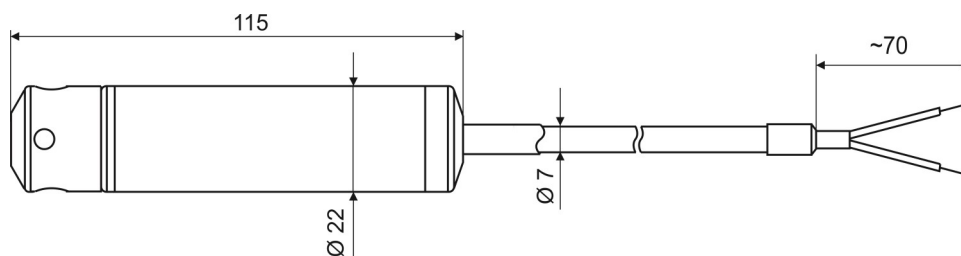
Application areas

- Water / sewage
- Drinking water production
- Water treatment, water recycling
- Groundwater monitoring
- Rain overflow basin, level measurement



Type	3233	Options
Nominal pressure	0...100 mbar up to 0...10 bar	
Output signal	4...20 mA / 2-wire	
Resolution output signal	16 bit delay in connection to power supply	
Power supply	10...30 V _{DC}	
Accuracy	± 0,5 % FS (measuring range)	± 0,25 % FS (from 2024)
Long time stability	≤ ± 0,1 % FSO / year at reference conditions	
Permissible load	$R_{max} = [(U_{-12}) / 0,02 A] \Omega$	
Influence effects	Power supply: 0,05% FSO / 10 V, perm. load : 0,05 % FSO / KΩ	
Temperatures	Medium 0...60°C	
Electrical protective measures	permanent short-circuit protection, reverse polarity protection, Electromagnetic protection: emitted interference and interference immunity according to EN 61326	
Electrical connection Cable with coated material	PUR with inner air hose and inner steel mesh, black Ø 7,0 mm	
Materials	Case: Stainless steel Diaphragm: stainless steel Sealing: FKM	
Power consumption	Signal output current max. 25 mA	
Protection	IP 68	
Add. options	Pt100 or Pt1000	

Dimensional drawing Dimensions in mm



SUKU Druck- und Temperaturmesstechnik GmbH

Garnsdorfer Hauptstraße 109 • 09244 Lichtenau / Sachsen - GERMANY
Tel.: +49 37208 / 2717 • Fax: +49 37208 / 61713 • contact@suku.de • www.suku.de

Type 3233

updated: May 2023

Sheet 3.25 Page 1 von 1

© 2023 SUKU Druck- und Temperaturmesstechnik GmbH.

The specifications given in this document represent the state of engineering at the time of publishing. We reserve the right to make modifications to the specifications and materials.