

# BIMETAL-POINTER-THERMOMETER



DRUCK & TEMPERATUR

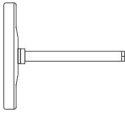
## Accuracy class 1

### NS 63, NS 80, NS 100, NS 160

High-quality execution, particularly suitable for use in machine-, container-, pipeline- and apparatus construction as well as in heating technology.



Protection tubes for use at static and dynamic pressures

Type	10 063	10 080	10 100	10 160	Options
Nominal size	63	80	100	160	
Symbol					
Accuracy	class 1				
Ranges (°C)	-30/+50, 0/40, 0/80, -20/+60, 0/60, 0/100, 0/120, 0/160, 0/200, 0/250, 0/300				0/350, 0/400, 0/500 and more see types B11 and B14
Application	Continuous load - measuring range, short-term (1h) - display range				
Pressure at thermowell	See page 2				
Case	1.4301 / 1.4016				
Dial	Aluminium, white, scale and letters black printed				
Pointer	Aluminium, black				
Window	Instrument flat glass				
Plain stem	Ø 8 mm, back centric				
Connection	Plain stem with collar for protection tube, Note: the thermometers can only be used with a suitable protection tube				Thread G 1/2 o. M20x1,5, rotated and pivoted with fixed thread = type 10.2
Plain stem length (Nominal length), (mm)	45, 63, 100, 160, 200, 250, 300, 400				more lengths on request
Protection class	IP 43 (EN 6+0529/IEC 529), with bayonet ring IP 56				
Weight (kg)	0,08	0,12	0,15	0,35	

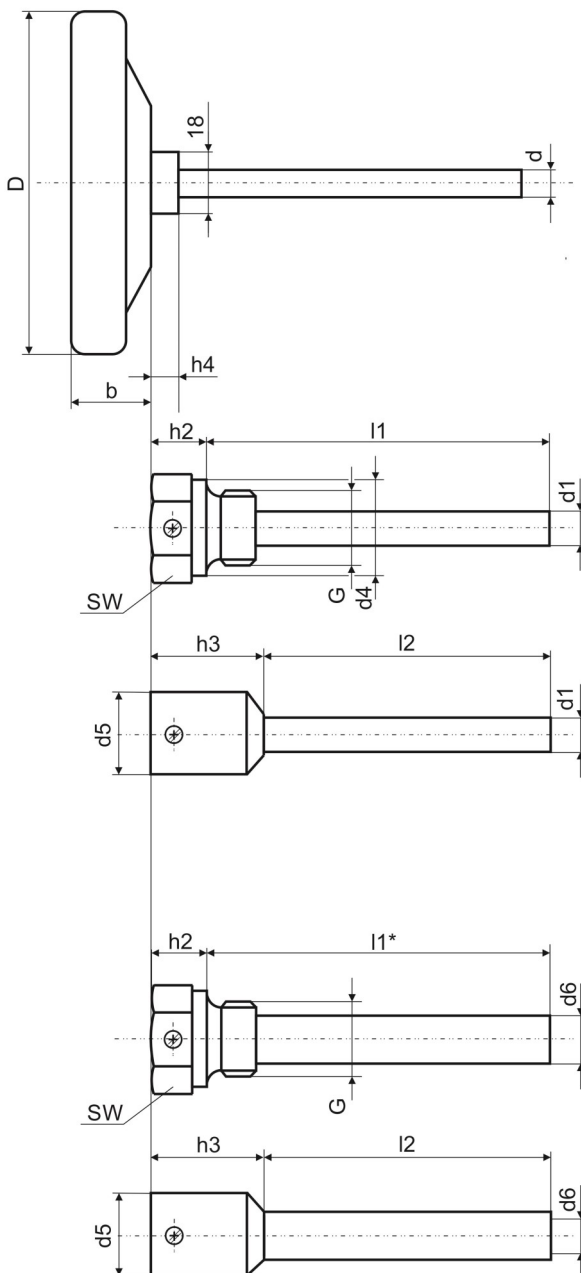
## Dimensional drawings

Dimensions in mm



DRUCK & TEMPERATUR

Type	D	d	b	d <sub>1</sub>	d <sub>1</sub>	d <sub>4</sub>	d <sub>5</sub>	d <sub>6</sub>	h <sub>2</sub>	h <sub>3</sub>	h <sub>4</sub>	G	SW	l <sub>1</sub>	l <sub>2</sub>
<b>10 063</b>	63	8	16	10	12	26	24	14	13	33	8	G1/2	27	45, 63, 100, 150, 200, 250, 300, 400 and on request	22, 43, 80, 140, 180
<b>10 080</b>	80	8	17	10	12	26	24	14	13	33	8	G1/2	27		
<b>10 100</b>	100	8	21	10	12	26	24	14	13	33	8	G1/2	27		
<b>10 160</b>	160	8	25	10	12	26	24	14	13	33	8	G1/2	27		



Order additionally:

### At static pressures

#### **Protection tube with fixing screw**

Thread G 1/2A

Cu-alloy

Type 988, PN6

St35

Type 968, PN25

Stainless steel 1.4301/1.4571

Type 998, PN25

#### **Weld-in protection tube**

St35

Type 969, PN25

1.4571

Type 999, PN25

### At dynamic pressures

#### **Protection tube with fixing screw**

##### **of solid material**

C22.8

Type E 968, PN160

1.4571

Type E 998, PN160

l1\* 63,100,150,200

#### **Weld-in protection tube of solid material**

C22.8

Type S 969 PN160

1.4571

Type S 999 PN160