

# BIMETAL-POINTER-THERMOMETER



DRUCK & TEMPERATUR


**Accuracy class 1**

**NS 63, NS 80, NS 100, NS 160**

High-quality execution, particularly suitable for use in machine-, container-, pipeline- and apparatus construction as well as in heating technology.



Protection tubes for use at static and dynamic pressures

Type	03 063	03 080	03 100	103160	Options
Nominal size	63	80	100	160	
Symbol					
Accuracy	class 1				
Ranges (°C)	-30/+50, 0/40, 0/80, -20/+60, 0/60, 0/100, 0/120, 0/160, 0/200, 0/250, 0/300				0/350, 0/400, 0/500 and more see type B11 and B14
Application	Continuous load - measuring range, short-term (1h) - display range				
Pressure at thermowell	See page 2				
Case	1.4301 / 1.4016				
Dial	Aluminium, white, scale and letters black printed				
Pointer	Aluminium, black				
Window	Instrument flat glass				
Plain stem	Ø 8 mm, bottom centric				
Connection	Plain stem with collar for protection tube, Note: the thermometers can only be used with a suitable protection tube				Thread G 1/2 o. M20x1,5, rotated and pivoted with fixed thread = type 10.2
Plain stem length (Nominal length), (mm)	45, 63, 100, 160, 200, 250, 300, 400				more lengths on request
Protection class	IP 43 (EN 6+0529/IEC 529), with bayonet ring IP 56				
Weight (kg)	0,08	0,12	0,15	0,35	

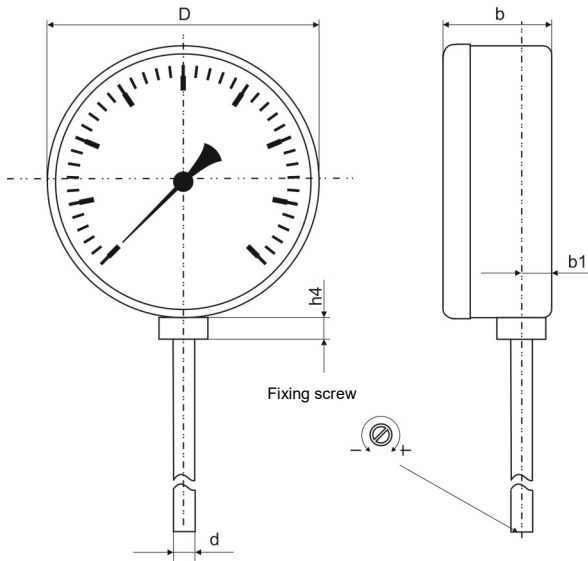
## Dimensional drawings

Dimensions in mm



DRUCK & TEMPERATUR

Type	D	d	b	d <sub>1</sub>	d <sub>1</sub>	d <sub>4</sub>	d <sub>5</sub>	d <sub>6</sub>	h <sub>2</sub>	h <sub>3</sub>	h <sub>4</sub>	G	SW	l <sub>1</sub>	l <sub>2</sub>
<b>10 063</b>	63	8	16	10	12	26	24	14	13	33	8	G1/2	27	45, 63, 100,	22, 43, 80,
<b>10 080</b>	80	8	17	10	12	26	24	14	13	33	8	G1/2	27	150, 200,	140, 180
<b>10 100</b>	100	8	21	10	12	26	24	14	13	33	8	G1/2	27	250, 300, 400	
<b>10 160</b>	160	8	25	10	12	26	24	14	13	33	8	G1/2	27	+ on request	



Order additionally:

### At static pressures

#### Protection tube with fixing screw

Thread G 1/2A

Cu-alloy

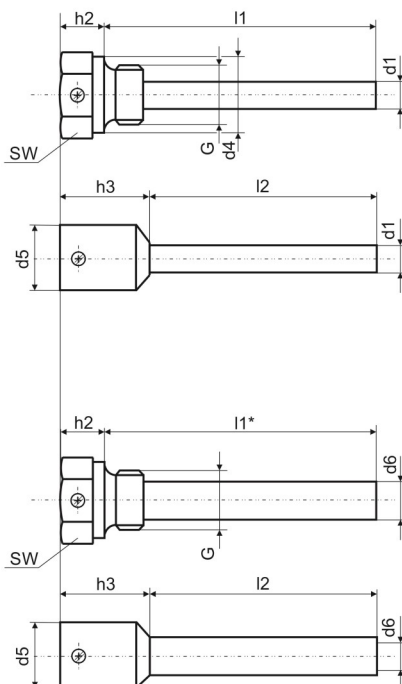
Type 988, PN6

St35

Type 968, PN25

Stainless steel 1.4301/1.4571

Type 998, PN25



### Weld-in protection tube

St35

Type 969, PN25

1.4571

Type 999, PN25

### At dynamic pressures

#### Protection tube with fixing screw

#### of solid material

C22.8

Type E 968, PN160

1.4571

Type E 998, PN160

l1\* 63,100,150,200

#### Weld-in protection tube of solid material

C22.8

Type S 969 PN160

1.4571

Type S 999 PN160