

# BIMETALL-POINTER-THERMOMETER

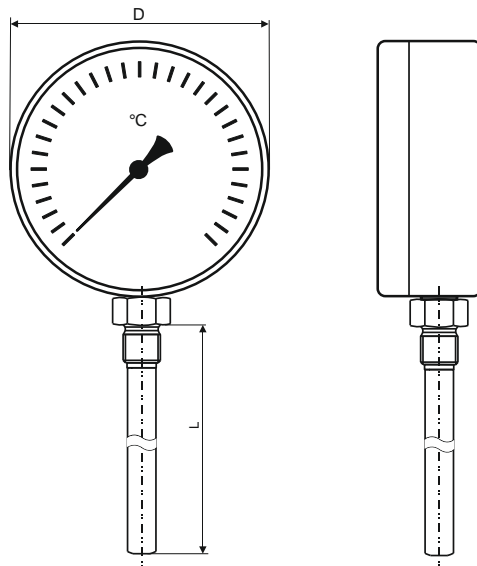
with vertical stem



A solid constructed temperature measuring instrument for heating and sanitary

Model	02 063	02 100	02 160	Options
Nominal size	63	100	160	
Form				
Accuracy	2			1,6, 1
Ranges	-20...+60°C, 0...100°C, <b>0...120°C</b> , 0...160°C, 0...200°C			-50/+50; -30/+30; -20/+40; 0/+40; 0/+50; 0/+60; 0/+80; 0/+250°C other on request
Application	End of scale value			
Pressure at thermowell	max. 10 bar			
Case	Steel galvanized			
Slip ring	Stainless steel			
Dial	Aluminium white, black printed			
Pointer	Aluminium black			
Window	Glass			
Plain stem	Ø 9mm, vertical bottom			
Connection	Removable thermowell made of brass 58, Ø11mm Thread connection G1½A with lateral screw M3 steel galvanized			Protection tube 1. Steel galvanized or 2. Welded connection Made of good welding automation steel
Protection	IP 43			
Plain stem	45, 63, 100 (turned of full material) 150, 200 (multipart, soft or hard solded)			other lenghts on request

Model	Dimensions in mm	
	D	L - Nominal length (gage length)
02 063	63	45 (45), 63 (60), 100 (95), 150 (145), 200 (195), 300 (295); other on request
02 100	100	45 (45), 63 (60), 100 (95), 150 (145), 200 (195), 300 (295); other on request
02 160	160	45 (45), 63 (60), 100 (95), 150 (145), 200 (195), 300 (295); other on request

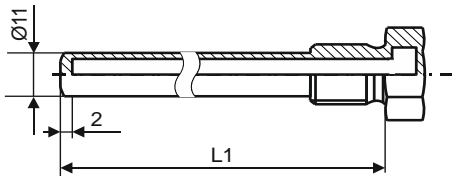


Measuring range	Subdivision
-50 ... + 50 °C	1:1
-30 ... + 30 °C	1:1
-20 ... + 40 °C	1:1
-20 ... + 60 °C	1:1
0 ... 40 °C	1:1
0 ... 50 °C	1:1
0 ... 60 °C	1:1
0 ... 80 °C	1:1
0 ... 100 °C	1:1
<b>0 ... 120 °C</b>	<b>2:1</b>
0 ... 160 °C	2:1
0 ... 200 °C	5:1
0 ... 250 °C	5:1
0 ... 300 °C	5:1

**Options**

**Protection tube screw stainless steel 1.4571**

Thread connection G1/2A with lateral screw M3 made of steel, galvanized up to length 100 mm turned of fullmaterial, other length soft solded, over 120°C hart solded

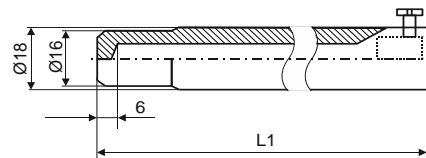


Nominal lengths	L1 Dimensions in mm
45	40
63	60
100	95
150	155
200	195

or

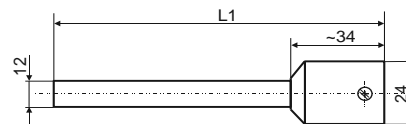
**Type 966 Protection tube welded connection made of good welding automation steel**

with lateral screw M3, steel galvanized, up to length 100 mm turned fullmaterial, other lengths welded



**one-piece  
PN40  
or**

Nominal length	L1 Dimensions in mm
45	55
63	70
100	105
150	155
200	205



**two-piece  
PN25**

Nominal length	L1 Dimensions in mm
45	58
63	76
100	113
150	163
200	213